

Using Your New Law Enforcement II Radar – 9 Steps from Start to Finish

You've just received a big box (or boxes) with the JAMAR Law Enforcement II Radar and all the accessories that go with it. So right about now you're probably thinking, 'Where do I start?' Don't worry, that's what this guide is for. We'll take you from unpacking the equipment to producing reports in 9 easy steps.

● Step 1 – Unpacking and Checking Your Equipment

First, let's unpack everything and make sure you got everything you were supposed to get. With most orders there should be a single sheet of paper that shows the items that are part of your Law Enforcement II Radar kit and the quantity of each item that you should have received. Check the contents of your box\boxes against this sheet. If anything is missing, let us know.



● Step 2 – Setting up Your Computer

To program the Law Enforcement II Radar, and to download data from it, you'll use the STARnext software.

- If your kit includes a laptop, the STARnext software has been pre-installed for you.
- If you purchased the STARnext software, but are using your own PC, install the software using the Flash Drive provided.
- If you are using your own computer and already have STARnext, check to see that you are using the latest version and update it as necessary. The latest version of STARnext can be downloaded at www.jamartech.com/starnext-download

● Step 3 – Selecting an Installation Site

Now that we've unpacked everything and setup the computer, we're ready to select a site for doing some data collection. When choosing a site to install the Law Enforcement II Radar, keep in mind that the Radar will need to be mounted to a pole (typically a utility pole) or tree, so the site will need to have one of these available for use.



For the best results, the installation SHOULD be: at a 45 degree angle to the flow of traffic. Six to ten feet back from the road. At least six feet above the ground. Where the far lane is no more than 50' away. Where traffic is free flowing.

The LE II Radar SHOULD NOT be installed: at an intersection. Near where vehicles are likely to park. Where the radar head is at an extreme angle. Where pedestrians are likely to be crossing. Where the Radar's "view" is obstructed.

● Step 4 – Installing the Law Enforcement II Radar

Once a site has been selected, the Law Enforcement II Radar can be easily mounted using the installation kit. For the most accurate results, install the mounting bracket at a 45 degree angle to the traffic.



Insert the pegs on the back of the Law Enforcement II Radar's mounting bracket into the large holes of the pole mounting bracket and slide the Radar down to secure it in place.



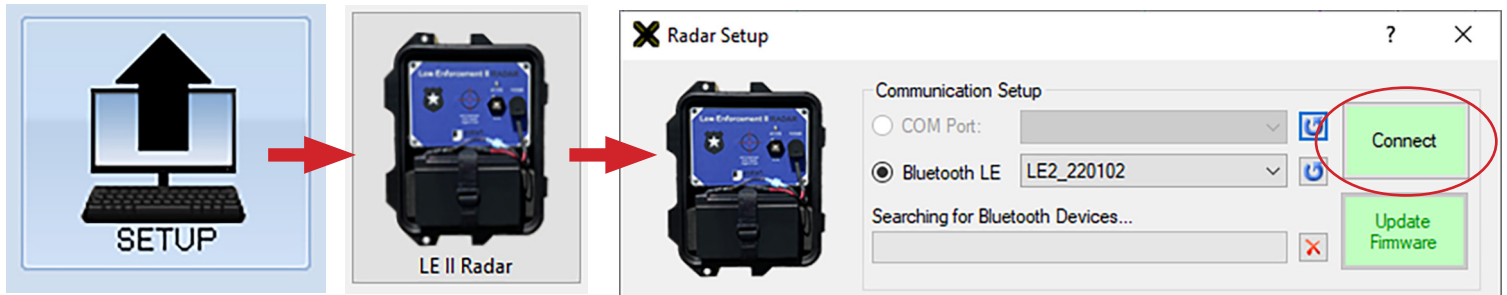
Depending on how high you mount the LE II Radar, you may need to tilt the unit so it is facing down into the traffic lane. This is done by adjusting the bracket on the back of the Radar. Loosen the top bolt on the bracket (there is one on each side) using the provided hex head allen wrench. Once loosened, the unit can be tilted down. The allen wrench can then be used to retighten the bracket. The maximum pitch the LE II can have is approximately 20 degrees.



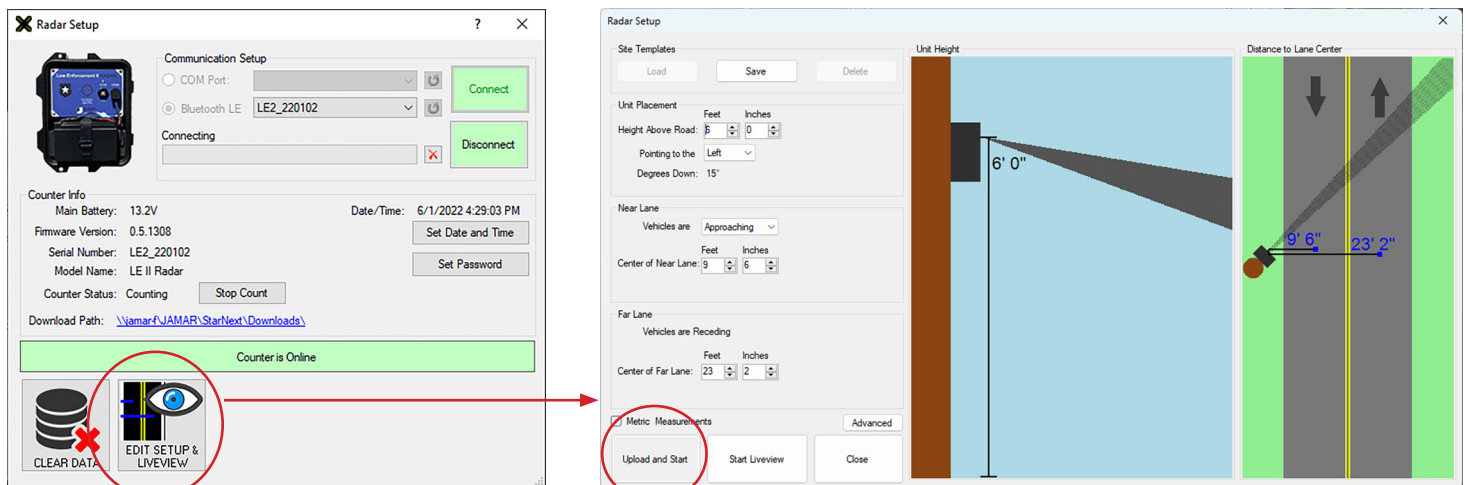
● Step 5 – Setting Up a Study: Programming the Law Enforcement II Radar

Once the LE II Radar is installed, we're ready to program it to record data. Open the door of the Radar. If the battery is not already connected, connect it to the radar head to provide power.

LE II Radars have wireless Low Energy Bluetooth capability which allows you to connect without a hard wire USB connection. The STARnext software will automatically search for, and display, any units it finds powered on within its range. Note that there is no need to go through the 'Pairing' process as was common with units that used a Classic Bluetooth connection. If your laptop does not have Bluetooth you can use the USB cable as described in the full User's Manual.



Select **Setup** from the Quick Start menu, then the LE II Radar. Make sure you have the "Bluetooth LE" radio button selected and click the **Connect** button to have the STARnext software connect to the Law Enforcement II Radar.



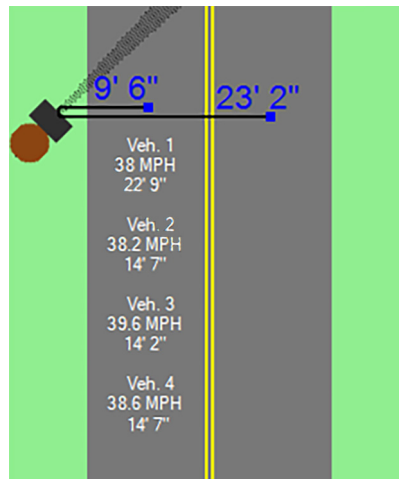
Once connected, click the *Edit Setup & LiveView* button.

Set distances for near and far lanes, as well as recorder head height. Make sure to tap '**Upload Site Geometry**' to begin the count.

● Step 6 – Checking Recorded Data in LiveView



Once the Radar is setup and recording, the LiveView should be used to check setup accuracy.



As vehicles pass the detection zone, the LiveView screen should show the speed and length of the vehicle.

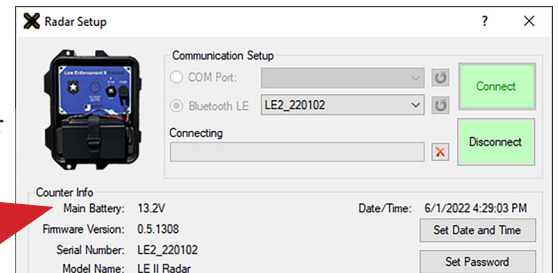
Troubleshooting - If LiveView is not showing vehicle data as vehicles pass the detection zone, check that the Radar has been aimed properly. The crosshairs printed on the face of the radar head should be aimed at a 45 degree angle to the road.

● Step 7 – Securing the LE Radar and Monitoring Battery Life

Now that the Radar has been installed, programmed and checked for accuracy, we're ready to leave it to do its job of collecting data. Close the front door and latch it shut. Lock the unit into the mounting bracket, and lock the door latches, using the locks provided. If you wish to add further security to the installation, the chain that was provided with the Radar can be wrapped around the pole through the bracket area, then locked in place.

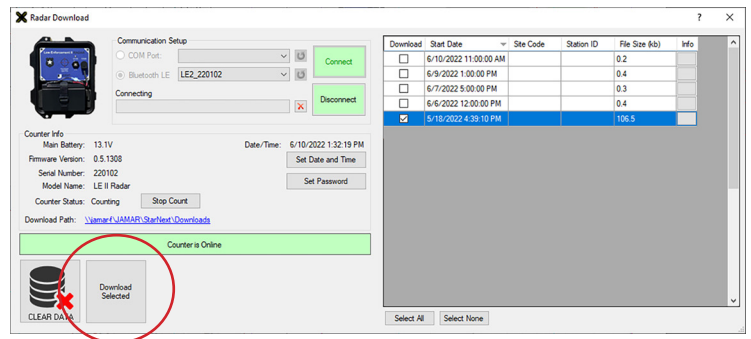
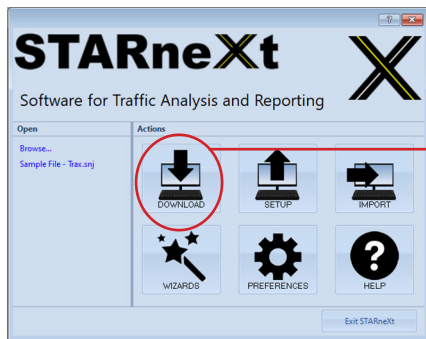


Your Law Enforcement Radar will record data for about two weeks on one fully charged (13.4v or higher) battery. If you will be collecting data for more than this, we recommend that you periodically monitor the charge on the battery to be sure that you get good data throughout the duration of your study. To do this, open the LE Radar, connect the computer and connect to the Radar. The main battery voltage is displayed in the LE Radar Setup screen, as shown here.

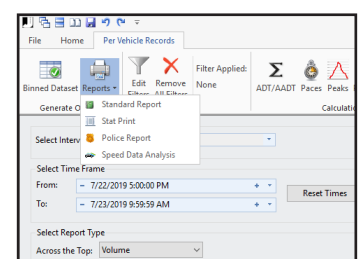
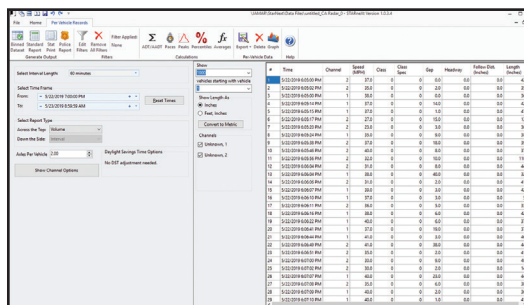
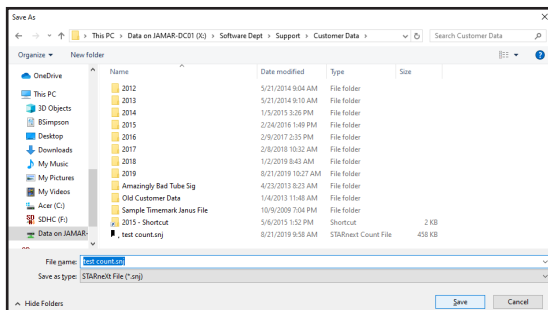


● Step 8 –Downloading Data from the Law Enforcement II Radar to the Computer

Note: The LE II Radar can either be downloaded in the field to a laptop, or brought back into the office to download to a desktop.



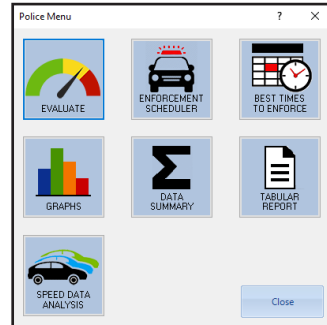
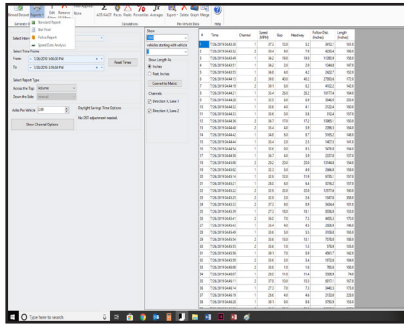
To download the data you have collected, select **Download** from the Quick Start menu, then the LE II Radar. Make sure you have the "Bluetooth LE" radio button selected and click the **Connect** button to have the STARnext software connect to the Law Enforcement II Radar. Once connected, select the files you want to download and click the **Download Selected** button.



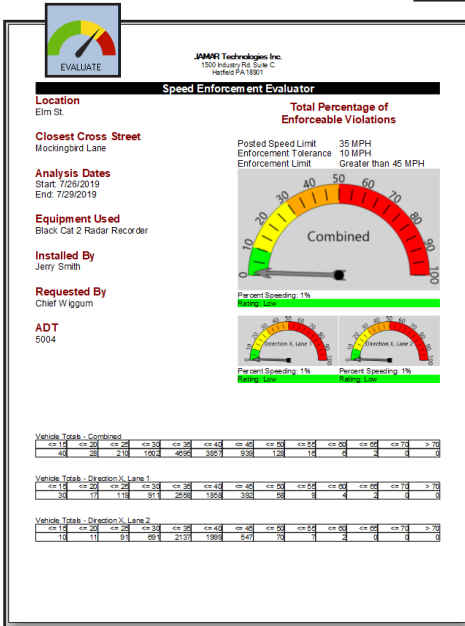
Once you download your count it will load to the Per Vehicle screen. From this screen you have several options including binned data set, or you can go right to the reports. Lets take a look at the Police Reports.

● Step 9 – Producing Reports

If you have collected your data in the recommended Per Vehicle format, once your study opens you'll see the Per Vehicle window. To produce reports from your data, click the button labelled *Police Reports* and the Police Reports screen will appear.

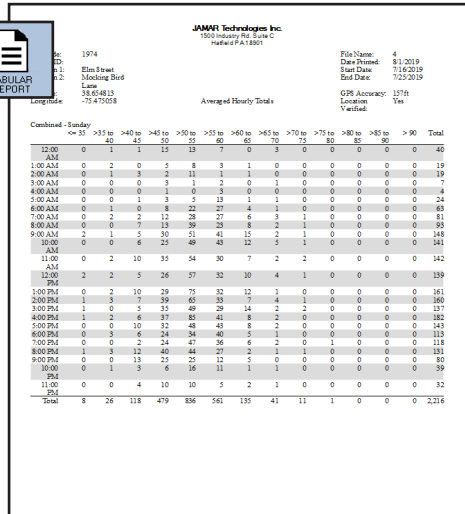
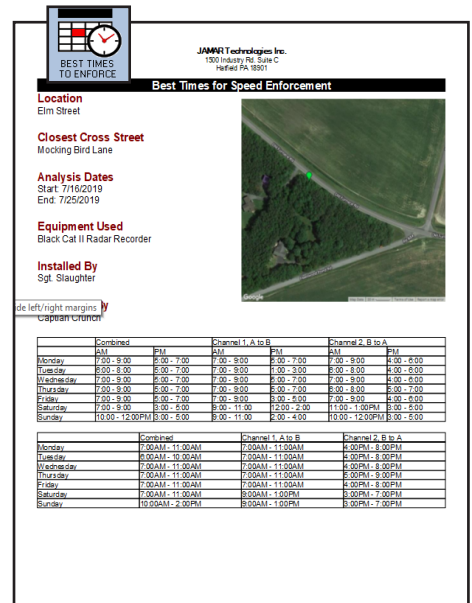


There are a number of PD reports to select from such as the Data Summery and the Enforcement Scheduler. the reports. The other buttons will produce reports as discussed below.



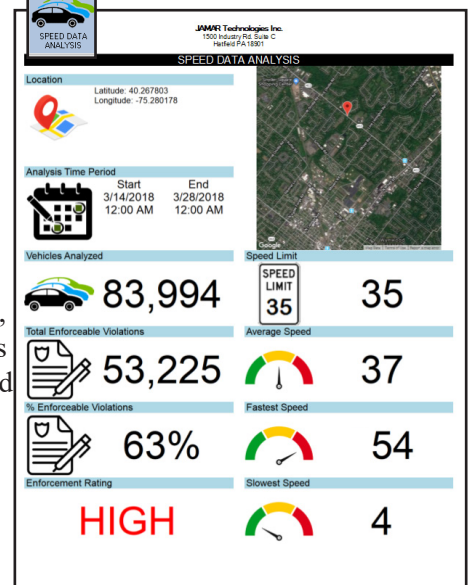
The **Speed Enforcement Evaluator** is a one-page report that concisely displays whether or not a speeding problem exists, based on the percentage of enforceable violations. The report makes for an excellent hand-out at public meetings and is *highly* customizable.

Designed to make scheduling enforcement more effective, the **Best Times for Enforcement** report details what times of the day have the largest number of enforceable violations.



The Tabular Reports option gives you another way to show your speed data. You have the option of One Line Summary, One Day Per Line or Hourly Data.

The **Speed Data Analysis** Report gives you a clear and concise overview of the count showing values like Total Vehicles counted, Average Speed as well as fastest and slowest vehicles.



The **Graphs** selection gives you access to a variety of graphs that display vehicle speed and vehicle length info in different formats. Hit the *Print* button to print them all.

*For an in-depth look at the above reports,
and how to use the Enforcement Scheduler
function, refer to the **Quick Start** guide
Understanding STARnext's Police Reports.*

